

**Worklist: 6265****REVIEWED**

By Britany Wylie at 10:41 am, Mar 08, 2023

<u>LAB_CASE</u>	<u>ITEM</u>	<u>ITEM_TYPE</u>	<u>DESCRIPTION</u>	
C2023-0383	1	BCK	AM 25/AM 26 Blood MultiDrug/THC Screen by LC-QQQ	
C2023-0385	1	UCK	AM 25/AM 26 Urine MultiDrug/THC Screen by LC-QQQ	
C2023-0393	1	BCK	AM 25/AM 26 Blood MultiDrug/THC Screen by LC-QQQ	
C2023-0402	1	BCK	AM 25/AM 26 Blood MultiDrug/THC Screen by LC-QQQ	
C2023-0418	1	UCK	AM 25/AM 26 Urine MultiDrug/THC Screen by LC-QQQ	
C2023-0428	6	BCK	AM 25/AM 26 Blood MultiDrug/THC Screen by LC-QQQ	
C2023-0434	2	BCK	AM 25/AM 26 Blood MultiDrug/THC Screen by LC-QQQ	
C2023-0441	2	UCK	AM 25/AM 26 Urine MultiDrug/THC Screen by LC-QQQ	
C2023-0443	2	BCK	AM 25/AM 26 Blood MultiDrug/THC Screen by LC-QQQ	
C2023-0461	3	UCK	AM 25/AM 26 Urine MultiDrug/THC Screen by LC-QQQ	
C2023-0466	1	UCK	AM 25/AM 26 Urine MultiDrug/THC Screen by LC-QQQ	
C2023-0498	1	BCK	AM 25/AM 26 Blood MultiDrug/THC Screen by LC-QQQ	
C2023-0523	6	BCK	AM 25/AM 26 Blood MultiDrug/THC Screen by LC-QQQ	
C2023-0541	1	BCK	AM 25/AM 26 Blood MultiDrug/THC Screen by LC-QQQ	

# AM# 25: Multi-Drug Screen in Blood and Urine by LC-MS/MS

Extraction Date: 3/8/23 Analyst: Anne Nord  
Plate lot#: 220805 Plate retest date: 02/05/23

**Mobile phase A:** 10mM Ammonium Formate  
0.5M Ammonium Hydroxide  
**Mobile phase B:** 0.1% Formic Acid in MeOH  
Ethyl Acetate LC 20% Methanol  
**Blank Blood Lot:** 22B52016-1 **Blank Urine lot:** 12522 **Column:** Agilent Phenyl Hexyl (4.6x50mm, 2.7um)  
**LCMS-QQQ ID:** 69679

## Pre-Analytic:

- 1. Check levels of mobile phases and needle wash refill as needed. Ensure waste is not full.
- 2. Ensure correct column is installed and begin mobile phase flow allow to equilibrate ~ 30 minutes.

## Analytic:

- 1. Remove standards, plate, controls, and samples from cold storage. Allow to reach room temperature.
- 2. Urine hydrolysis pipette: 250 ul urine in blank well, add 40 ul BG Turbo, add 100 ul 500 mm sodium phosphate buffer mix for at least five minutes ambient temperature.  
Pipette 250 µL blood (calibrated pipette) or 250 ul urine in wells of analytical (standards) plate. **Pipette ID: 390993**
- 3. Pipette 250 µL of 0.5 M ammonium hydroxide in wells of analytical plate.
- 4. Place on shaking incubator at ambient temp., 900 rpm for 15 minutes.
- 5. Transfer 300 µL of blood or urine+base mixture to corresponding wells of SLE+ plate.
- 6. Apply positive pressure for approx. 10-15 seconds (or until no liquid remains on top of sorbent).  
*(Load at 85-100 PSI- Selector to the right) Manifold ID: 66792*
- 7. Wait 5 minutes.
- 8. Add 900 µL ethyl acetate.
- 9. Wait 5 minutes.
- 10. Apply positive pressure for approx. 10-15 seconds. *(12-15 PSI- Selector to the left).*
- 11. Add 900 µL ethyl acetate.
- 12. Wait 5 minutes.
- 13. Apply positive pressure for approx. 10-15 seconds. *(12-15 PSI- Selector to the left).*
- 14. Remove plate containing eluate. add 50 ul 1% HCl in MeOH Place on SPE Dry and evaporate to dryness at approx. 35°C.  
*SPE Dry ID: 66819*
- 15. Reconstitute in 100 µL 20% LC MeOH in LC Water and heat seal plate with foil. Place in autosampler and run worklist.

## Post-Analytic

- 1. Open quantitation software and create a new quantitation batch.
- 2. Make necessary changes to integration limits
- 3. Evaluate samples, S/N of primary transition >5 and S/N of secondary transition >3 or evaluation of peak symmetry and resolution. Within +/- 2% or 0.1 min RT of administrative control. Calculated concentration 5 or greater or 2-5 for discretionary range.
- 4. Did all QCs pass for each analyte? (If no is it described in comments?)
- 5. Central File Packet to include: LIMS Worklist, Method Checklist, Calibration and Control Reports


COMMENTS: *External controls run for plate re-test.*

*C2023-0441-2 not evaluated for phenytoin due to low internal response.*

	1	2	3	4	5	6	7	8	9	10	11	12
A	Cal 1	434-2									441-2	385-1
B		498-1										
C	negative blood	443-2									466-1	
D	external blood	523-6									461-3	
E	383-1	541-1									418-1	
F	393-1											
G	402-1										external control urine	
H	428-3										negative urine	

C2023-\_\_\_\_-\_\_

plate position 2



Toxicology AM method 25/28 urine external control prep

working solution 10000 ng/ml in meoh diphendydramine, methamphetamine, alprazolam, , morphine  
Stock solution 1mg/ml 50 ul each in 4800 ul MeOH (VWR 21050767)

ppd 7/7/22: Exp: 7/7/23 lot 7722 by AMN

Drug	lot	expiration
Methamphetamine	FE03132001	7/1/2025
alprazolam	FE06102008	6/1/2025
Diphendydramine	FN02212011	3/1/2025
Morphine	FE03232010	4/1/2025

**AM 25/28 control 500 ul working solution (7722) in 4500 ul negative urine (1000ng/mL Expected concentration)**

ppd 7/7/22, exp 7/7/23 lot u7722 negative urine 21522 by AMN

**AM 25/28 Blood Control: 50ul working solution (7722) in 4950 ul neg blood (100ng/mL Expected concentration)**

ppp 7/7/22, exp 7/7/23 lot b7722 neg blood 22B52016-3 by AMN



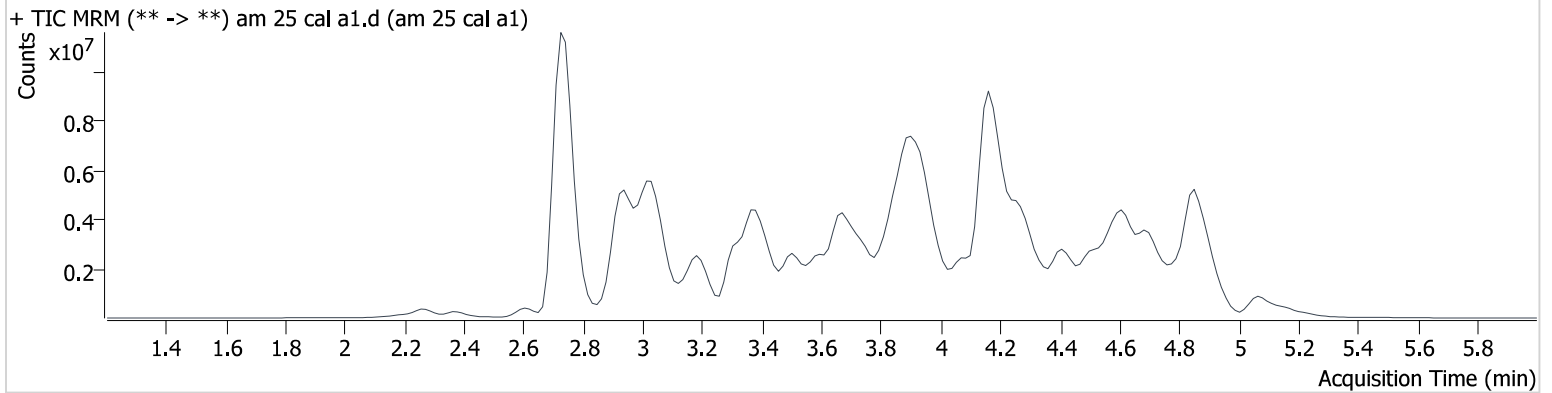
# AM #25 Multi-Drug Screen Results

**Batch results** D:\MassHunter\Data\2023\am 25-26\030823\QuantResults\mds.batch.bin  
**Calibration Last Update** 3/8/2023 3:57:50 PM

**Instrument** 69679  
**Type** Cal  
**Acq. Method** mds713.m  
**Sample Position** P2-A1  
**Injection Volume** 2.5  
**Acq. Date-Time** 3/8/2023 12:07:50 PM  
**Sample Info.**

**Data File** am 25 cal a1.d  
**Sample** am 25 cal a1  
**Operator** Anne Nord  
**Comment**

## Sample Chromatogram



Name	RT	Resp.	S/N	S/N	ISTD Resp.	Calc. Conc.
10-OH-Carbamazepine	3.863	1287648	680.3	56.3	4903116	10.000
6-MAM	2.876	26683	7644.9	5601.0	703001	10.000
7-aminoclonazepam	3.629	445112	116.8	58141.0	2275859	10.000
7-aminoflunitrazepam	3.859	797858	453.6	1079.6	2275859	10.000
9-Hydroxyrisperidone	3.959	2382526	601.8	12858.4	2275859	10.000
Acetyl Fentanyl	3.824	177709	194.4	12895.5	7509954	10.000
Acetyl Norfentanyl	2.899	184759	538.0	63.9	7509954	10.000
a-hydroxyalprazolam	4.716	140134	108.2	216.7	2275859	10.000
alpha-hydroxymidazolam	4.730	569965	207.0	220.0	2275859	10.000
alpha-PHP	3.863	1580788	1022.4	506.6	4128914	10.000
alpha-PVP	3.572	2169125	1021.7	376.6	4128914	10.000
Alprazolam	4.795	1216844	251.8	322.5	4903116	10.000
Amitriptyline	4.630	1245368	157.6	224.0	3686428	10.000
Amphetamine	2.965	1978262	205.1	1679.5	4128914	10.000
Benzoylcegonine	3.459	72456	34926.8	74.5	120866	10.000
Brompheniramine	4.225	55916	88.0	7.7	32068415	10.000
Buprenorphine	4.204	37087	12791.4	261.9	795699	10.000
Bupropion	3.833	1873225	1063.2	1767.1	7641129	10.000
Carbamazepine	4.372	2898324	1356.5	326.1	33508	10.000
Carisoprodol	4.309	602433	160251.7	209.1	2067792	10.000
Chlordiazepoxide	4.904	472189	336.7	29.3	7898738	10.000
Chlorpheniramine	4.106	3192050	∞	∞	3012154	10.000
Chlorpromazine	4.854	1565803	430783.0	594.4	6058037	10.000
Citalopram	4.270	1506443	172.3	129367.2	3012154	10.000
Clomipramine	4.855	1572770	548.7	632.2	3012154	10.000
Clonazepam	4.640	603860	194.5	23353.7	7898738	10.000
Clonazolam	4.529	552695	201658.2	24784.3	7898738	10.000
clozapine	4.408	2299927	603755.0	318889.8	7578125	10.000
Cocaehtylene	3.886	1983644	296.8	271235.3	11382474	10.000
Cocaine	3.672	2684363	4763.0	476.8	11382474	10.000
Codeine	2.741	180264	48216.4	539.7	2868257	10.000
Cyclobenzaprine	4.538	1995745	568.6	28.3	3686428	10.000
Desipramine	4.600	2684970	960186.0	605.4	3686428	10.000
Dextromethorphan	4.215	1114529	745.0	152295.7	4695117	10.000



# AM #25 Multi-Drug Screen Results

Name	RT	Resp.	S/N	S/N	ISTD Resp.	Calc. Conc.
Dextrorphan	3.447	1209046	3383.8	294696.5	32068415	10.000
Diazepam	5.058	707379	704.8	467.4	7898738	10.000
Dihydrocodeine	2.710	533087	431.6	140.6	32068415	10.000
Dimethyltryptamine	3.039	1179628	835.1	469.4	11328658	10.000
Diphenhydramine	4.170	4683594	596.4	775.9	32068415	10.000
Doxepin	4.337	1064509	208.7	52.9	7426296	10.000
Doxylamine	3.752	4252723	776310.4	1890.2	1393801	10.000
Duloxetine	4.520	44827	16698.0	229.0	3173678	10.000
EDDP	4.214	1058931	118.4	77.9	1737884	10.000
Estazolam	4.705	2119033	1461.1	6129.2	7898738	10.000
Etizolam	4.775	107666	19463.6	121445.4	7898738	10.000
Fentanyl	4.084	159940	232.7	18199.1	7509954	10.000
Flualprazolam	4.608	436045	147448.3	64243.0	7898738	10.000
Flunitrazepam	4.763	1235715	1402.5	232005.6	7898738	10.000
Fluorofentanyl	4.099	139875	36917.1	184.8	7509954	10.000
Fluoxetine	4.504	1903401	87573.2	29277.2	3173678	10.000
Flurazepam	4.252	1436390	3951.1	1339.0	7898738	10.000
Hydrocodone	2.985	634504	134.0	293.2	2868257	10.000
Hydromorphone	2.379	528711	324.7	3795.3	2868257	10.000
hydroxyzine	4.667	1304309	946.3	2745.8	32068415	10.000
Imipramine	4.598	3488860	220.0	366.4	3686428	10.000
Ketamine	3.433	1588085	1241.5	123.8	32068415	10.000
Lamotrigine	3.601	122646	138.7	2147.7	3012154	10.000
Levamisole	2.931	1308038	956.3	226.7	32068415	10.000
Levetiracetam	2.613	572901	750.3	390.2	3012154	10.000
Lorazepam	4.609	179703	∞	∞	7898738	10.000
Maprotiline	4.630	814561	440.2	84.6	3686428	10.000
MDA	3.084	1488492	1258.8	342.2	11328658	10.000
MDEA	3.313	2482899	875.4	604.4	11328658	10.000
MDMA	3.160	2492046	1377586.7	565.4	11328658	10.000
Meperidine	3.678	1166333	711.3	245.4	32068415	10.000
Meprobamate	3.727	344357	121508.5	46.3	2067792	10.000
Methadone	4.564	2969590	1854.4	833.6	1737884	10.000
Methamphetamine	3.055	5385188	∞	∞	11328658	10.000
Methocarbamol	3.694	180196	383.2	3085.5	32068415	10.000
Methylphenidate	3.602	4400037	566.2	581.1	7582529	10.000
Metoprolol	3.507	344497	2795.0	18703.7	4695117	10.000
Midazolam	4.716	340923	65838.6	62670.8	7898738	10.000
Mirtazapine	3.769	1467637	504.8	749.3	32068415	10.000
Mitragynine	4.251	187407	39362.1	1142.6	7582529	10.000
Morphine	2.183	117485	∞	∞	83061	10.000
Norbuprenorphine	3.928	29444	12057.8	7679.7	795699	10.000
Nordiazepam	4.907	607541	95025.9	187.0	7898738	10.000
Norfentanyl	3.388	3142886	879.9	862.5	12434787	10.000
Norhydrocodone	2.986	48608	67.6	96.7	2868257	10.000
norketamine	3.419	312666	221.2	4121.1	32068415	10.000
Normeperidine	3.710	1349871	256.1	∞	3012154	10.000
Noroxycodone	2.938	626615	255.7	110.4	5450782	10.000
Nortriptyline	4.632	1243854	262133.8	173.8	3686428	10.000
O-desmethyl-tramadol	2.929	3596704	4344.3	216.5	3012154	10.000
O-Desmethylvenlafaxine	3.308	966966	168.0	356.8	3012154	10.000
Olanzapine	3.686	725265	94.9	76.9	33508	10.000
Oxazepam	4.721	1204937	376.5	115.8	4903116	10.000
Oxycodone	2.937	1420791	206.0	417.5	5450782	10.000
Oxymorphone	2.271	688111	221.9	426.1	83061	10.000
Paroxetine	4.546	279236	108.6	8304.7	3173678	10.000
Phenazepam	4.821	1184541	508571.5	209783.4	7898738	10.000
Phencyclidine	4.033	2294173	921.8	792.6	32068415	10.000
Phentermine	3.223	747330	∞	∞	7582529	10.000
Phenytion	4.248	51539	∞	4.4 <b>Low</b>	33508	10.000



# AM #25 Multi-Drug Screen Results

Name	RT	Resp.	S/N	S/N	ISTD Resp.	Calc. Conc.
primidone	3.527	155690	74919.2	49.4	3686428	10.000
Promethazine	4.506	3800145	662.0	348.7	3012154	10.000
Pseudoephedrine	2.735	45567275	7951.0	12935.5	7582529	10.000
Quetiapine	4.452	1614446	987.1	525.1	14365472	10.000
Risperidone	4.143	2288191	1121.8	236.1	415484	10.000
Sertraline	4.827	827791	599097.7	99146.4	3173678	10.000
Sufentanil	4.359	120440	75635.8	195.4	12434787	10.000
Tapentadol	3.527	2503973	8111.0	4432.0	2868257	10.000
Temazepam	4.873	1956698	1467.3	39.5	7898738	10.000
Topiramate	3.930	21356	12175.6	2165.4	82931	10.000
Tramadol	3.508	3608522	510.3	38.5	3012154	10.000
Trazodone	4.283	2089038	1143838.9	351660.8	7426296	10.000
Venlafaxine	3.921	3199065	854.4	203.0	3173678	10.000
Zaleplon	4.504	838840	235619.0	573.7	14365472	10.000
Zolpidem	3.918	3608504	4192.0	2303.4	14365472	10.000
Zopiclone	3.975	317550	1542.6	∞	1393801	10.000

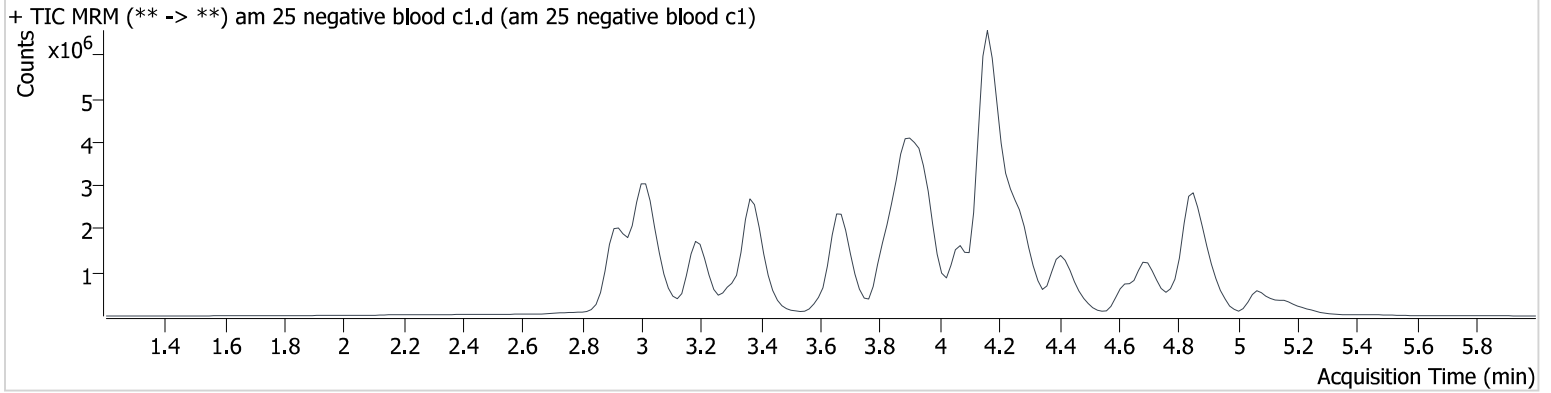


# AM #25 Multi-Drug Screen Results

**Batch results** D:\MassHunter\Data\2023\am 25-26\030823\QuantResults\mds.batch.bin  
**Calibration Last Update** 3/8/2023 3:57:50 PM

<b>Instrument</b>	69679	<b>Data File</b>	am 25 negative blood c1.d
<b>Type</b>	Sample	<b>Sample</b>	am 25 negative blood c1
<b>Acq. Method</b>	mds713.m	<b>Operator</b>	Anne Nord
<b>Sample Position</b>	P2-C1	<b>Comment</b>	
<b>Injection Volume</b>	2.5		
<b>Acq. Date-Time</b>	3/8/2023 12:14:42 PM		
<b>Sample Info.</b>			

## Sample Chromatogram





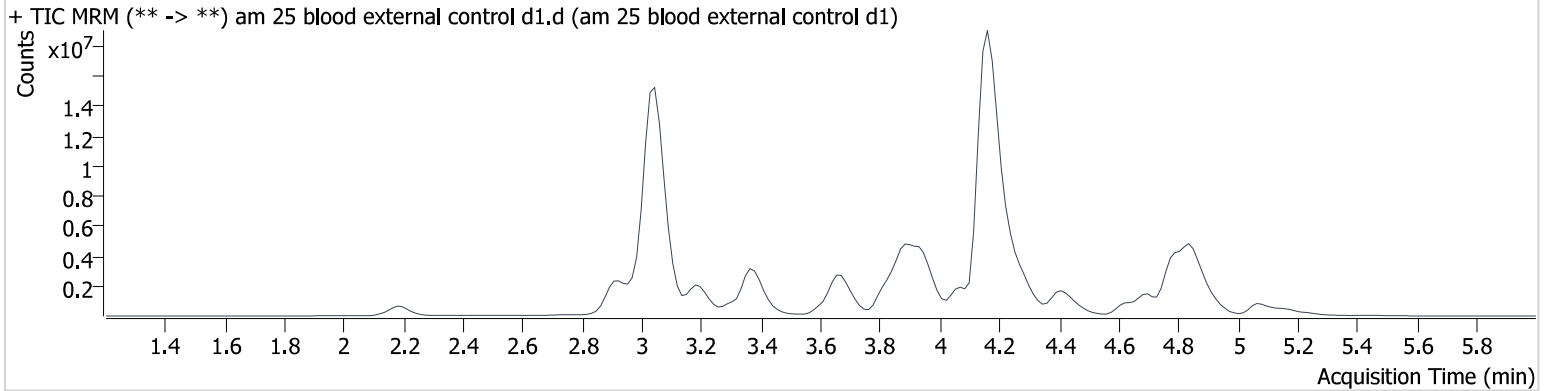


# AM #25 Multi-Drug Screen Results

**Batch results** D:\MassHunter\Data\2023\am 25-26\030823\QuantResults\mds.batch.bin  
**Calibration Last Update** 3/8/2023 3:57:50 PM

<b>Instrument</b>	69679	<b>Data File</b>	am 25 blood external control d1.d
<b>Type</b>	Sample	<b>Sample</b>	am 25 blood external control d1
<b>Acq. Method</b>	mds713.m	<b>Operator</b>	Anne Nord
<b>Sample Position</b>	P2-D1	<b>Comment</b>	
<b>Injection Volume</b>	2.5		
<b>Acq. Date-Time</b>	3/8/2023 12:21:24 PM		
<b>Sample Info.</b>			

## Sample Chromatogram



Name	RT	Resp.	S/N	S/N	ISTD Resp.	Calc. Conc.
Alprazolam	4.795	9791845	2767.3	626.3	5935049	66.478
Diphenhydramine	4.170	45367847	1733.0	1046.4	35806683	86.753
Methamphetamine	3.055	31075230	∞	∞	12348627	52.939
Morphine	2.183	1009761	18902.1	14922.7	84302	84.683

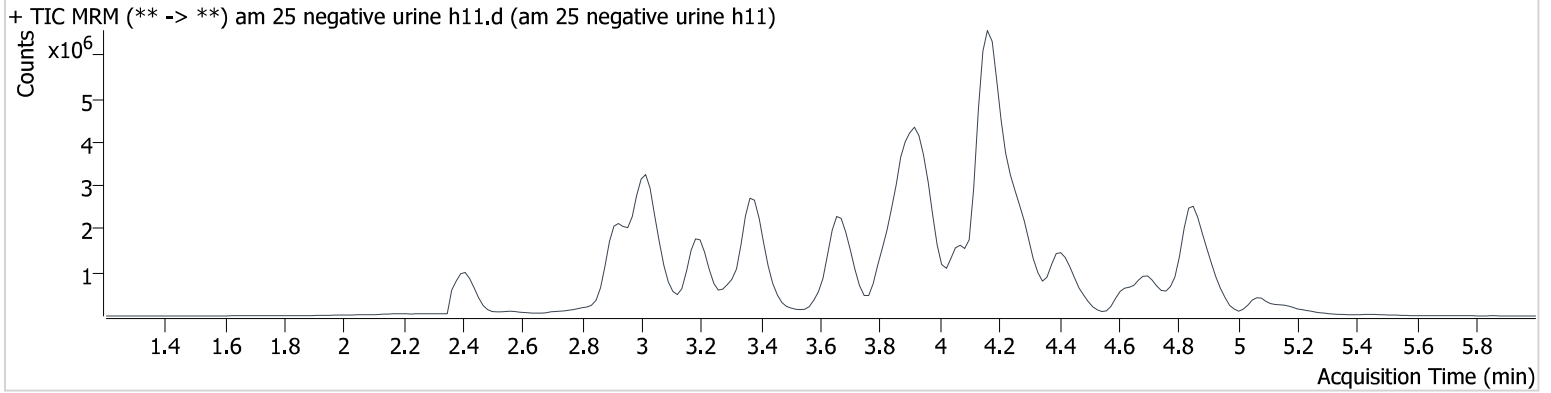


# AM #25 Multi-Drug Screen Results

**Batch results** D:\MassHunter\Data\2023\am 25-26\030823\QuantResults\mds.batch.bin  
**Calibration Last Update** 3/8/2023 3:57:50 PM

<b>Instrument</b>	69679	<b>Data File</b>	am 25 negative urine h11.d
<b>Type</b>	Sample	<b>Sample</b>	am 25 negative urine h11
<b>Acq. Method</b>	mds713.m	<b>Operator</b>	Anne Nord
<b>Sample Position</b>	P2-H11	<b>Comment</b>	
<b>Injection Volume</b>	2.5		
<b>Acq. Date-Time</b>	3/8/2023 1:35:05 PM		
<b>Sample Info.</b>			

## Sample Chromatogram



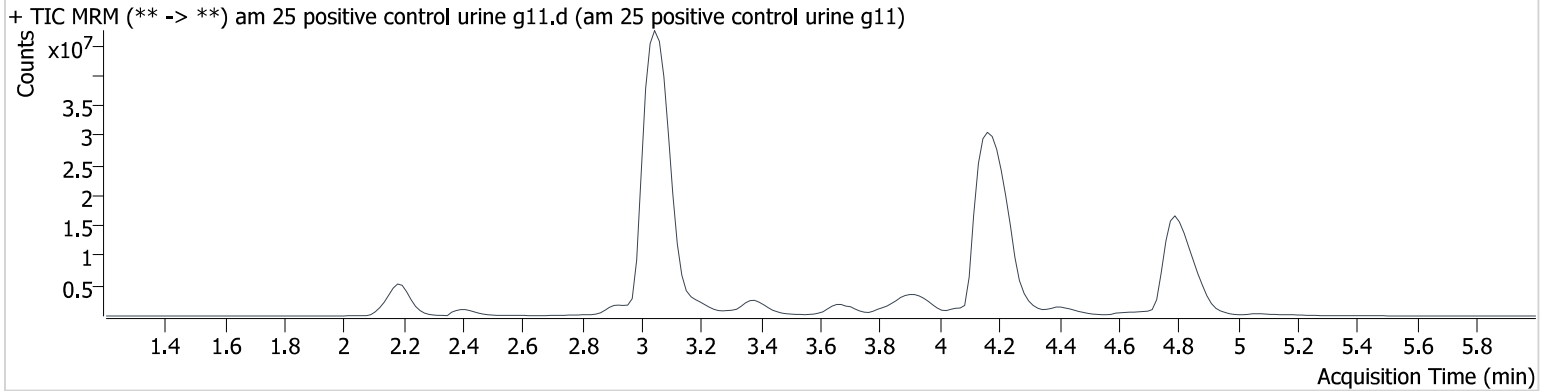


# AM #25 Multi-Drug Screen Results

**Batch results** D:\MassHunter\Data\2023\am 25-26\030823\QuantResults\mds.batch.bin  
**Calibration Last Update** 3/8/2023 3:57:50 PM

<b>Instrument</b>	69679	<b>Data File</b>	am 25 positive control urine g11.d
<b>Type</b>	Sample	<b>Sample</b>	am 25 positive control urine g11
<b>Acq. Method</b>	mds713.m	<b>Operator</b>	Anne Nord
<b>Sample Position</b>	P2-G11	<b>Comment</b>	
<b>Injection Volume</b>	2.5		
<b>Acq. Date-Time</b>	3/8/2023 1:28:23 PM		
<b>Sample Info.</b>			

## Sample Chromatogram



Name	RT	Resp.	S/N	S/N	ISTD Resp.	Calc. Conc.
Alprazolam	4.795	53685811	1398.1	4559.7	2088732	1035.652
Diphenhydramine	4.170	124534764	52576.9	2271.9	21448153	397.557
Methamphetamine	3.069	102958927	∞	∞	7988559	271.127
Morphine	2.183	9670401	∞	64503.1	90896	752.167

# AM# 26: THC and Metabolites Screen in Blood by LC-MS/MS

Extraction Date: 3/8/23 Analyst: Anne Nord

Plate lot#: 220802 Plate retest date: 2/02/23

**Mobile phase A:** 10mM Ammonium Formate  
0.1% Formic Acid in Water

**Mobile phase B:** 0.1% Formic acid in MeOH  
MTBE Hexane

**Blank Blood Lot:** 22B52016-1 **Urine Blank:** 12522

**Column:** Agilent Phenyl Hexyl (4.6x50mm: 2.7 um)

**LCMS-QQQ ID:** 69679

## Pre-Analytic:

- 1. Check levels of mobile phases and needle wash refill as needed. Ensure waste is not full.
- 2. Ensure correct column is installed and begin mobile phase flow allow to equilibrate ~ 30 minutes.

## Analytic:

- 1. Remove standards, plate, controls, and samples from cold storage. Allow to reach room temperature.
- 2. Urine hydrolysis: add 1.5 ml urine to blank plate, add 250 ul 1N KOH mix and incubate at 40 degrees for 15 minutes.  
Pipette **1000 µL blood (calibrated pipette)** in wells of analytical (standards) plate. **Pipette ID: I41142J**  
Pipette 1000 ul urine to analytical (standards) plate.
- 3. Place on shaking incubator at ambient temp., 900 rpm for 15 minutes.
- 4. Pipette **500 µL 0.1% formic acid in blood** wells **500 ul saturated phosphate buffer in urine** wells of analytical plate.
- 5. Place on shaking incubator at ambient temp., 900 rpm for 15 minutes.
- 6. Transfer **800 µL of blood acid or urine acid** mixture to corresponding wells of SLE+ plate.
- 7. Apply positive pressure for approx. 10-15 seconds (or until no liquid remains on top of sorbent).  
**(Load at 85-100 PSI- Selector to the right)** Manifold ID: 66792
- 8. Wait 5 minutes.
- 9. Add **2.25 mL MTBE** (add in 3 increments of 750 µL).
- 10. Wait 5 minutes.
- 11. Apply positive pressure for approx. 10-15 seconds. **(12-15 PSI- Selector to the left)**.
- 12. Add **2.25 mL hexane** (add in 3 increments of 750 µL).
- 13. Wait 5 minutes.
- 14. Apply positive pressure for approx. 10-15 seconds. **(12-15 PSI- Selector to the left)**.
- 15. Remove plate containing eluate. Place on SPE Dry and evaporate to dryness at approx. 35°C.  
*SPE Dry ID: 66819*
- 16. Reconstitute in **100 µL 100% LCMS MeOH** and heat seal plate with foil. Place in autosampler and run worklist.

## Post-Analytic

- 1. Create batch and process data.
- 2. Calculated sample concentration of 3 ng/mL or greater for THC and THC-OH, a calculated sample concentration of 10 ng/mL or greater for Carboxy-THC.
- 3. Retention time within +/- 2% or +/-0.100 min whichever is greater of the average retention time of the calibrators.
- 4. Did all QCs pass for each analyte? Yes
- 5. Central File Packet to include: LIMS Worklist, Method Checklist, Calibration and Control Reports

COMMENTS: *external controls run for plate re-test.*

	1	2	3	4	5	6
a	cal 1	Internal urine	498-1	523-6		
b	cal 2	negative blood	negative urine	external control urine		
c	cal 3	383-1	385-1	external control blood		
d	cal 4	393-1	418-1			
e	Cal 5	402-1	441-2			
f	cal 6	428-6	461-3			
g	cal 7	434-2	466-1			
h	Internal control (blood)	443-2	541-1 <del>451-1</del> 3/14/23			

Plate position 3

c2023-0\_\_-\_\_



# Toxicology AM method 27/26 external prep information

1.5 ★

3/28/23

.75 ★

3/28/23

working solution ~~15~~ ug/ml in meoh C-THC, THC-OH, ~~7.5~~ ug/ml THC

Stock solution 1mg/ml 7.5 ul each THC, 100 ug/ml 150 ul C-THC, 150 ul THC-OH in 9692.5 ul meOH  
Ppd 9/27/22 Exp: 9/27/23 lot 92722 by AMN

Drug	lot	expiration
C-THC	FE04151901	6/1/2024
THC-OH	FE06152002	6/1/2025
THC	FE04222001	5/1/2025

## AM 27/26 blood control 100 ul working solution in 9900 ul blood

ppd 9/27/22 exp 9/27/23 blood lot 22B52016-1	lot b92722	Concentration 7.5 ng/ml THC, 15 ng/ml C-THC, THC-OH	by amn
---	------------	--	--------

## AM 27/26 urine control 400 ul working solution in 9600 ul urine

out of use

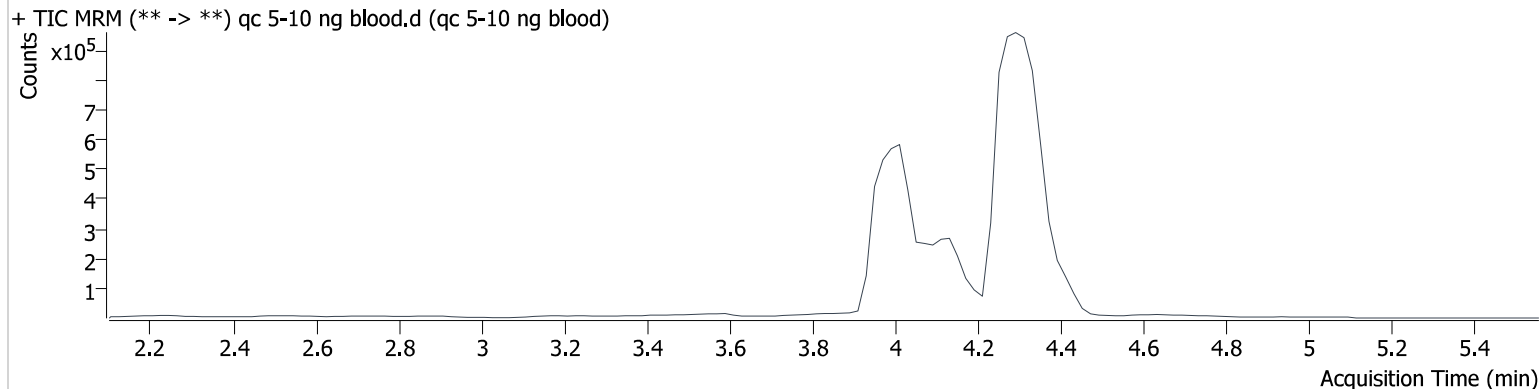
ppd 9/27/22 Exp 9/27/23 neg urine lot 7722	lot u92722	Concentration 30 ng/ml THC, and 60 ng/ml C-THC, THC-OH	by amn	

# AM #26 Cannabinoids Screen Results

**Batch results** D:\MassHunter\Data\2023\am 25-26\030823\QuantResults\cann.batch.bin  
**Calibration Last Update** 3/9/2023 9:07:49 AM

<b>Instrument</b>	69679	<b>Data File</b>	qc 5-10 ng blood.d
<b>Type</b>	QC	<b>Sample</b>	qc 5-10 ng blood
<b>Acq. Method</b>	am 26 cann scr 5-5-20.m	<b>Operator</b>	Anne Nord
<b>Sample Position</b>	P3-H1	<b>Comment</b>	
<b>Injection Volume</b>	5		
<b>Acq. Date-Time</b>	3/8/2023 3:50:19 PM		
<b>Sample Info.</b>			

## Sample Chromatogram



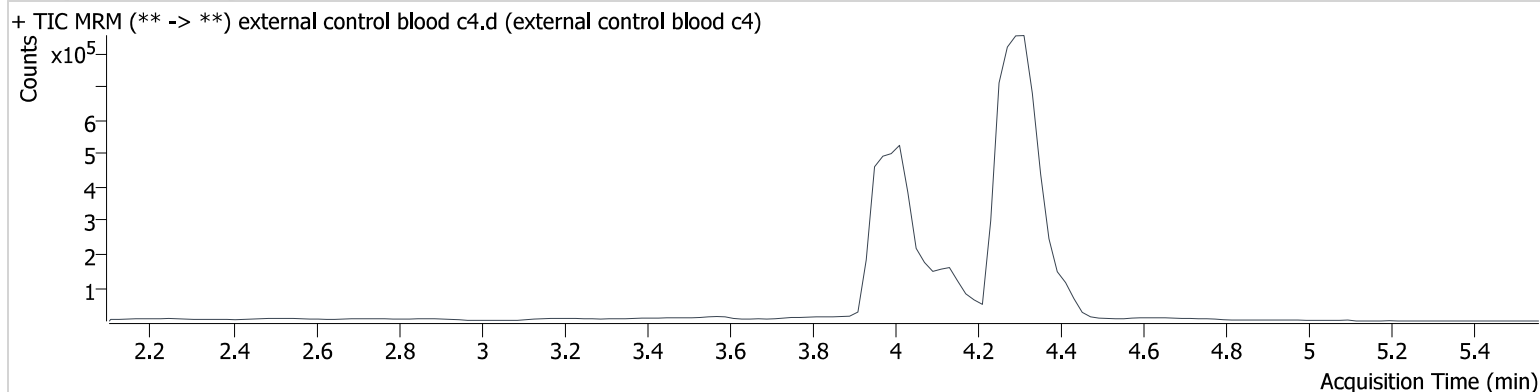
Name	RT	Resp.	ISTD Resp.	Final Conc.
THC	4.385	24880	579583	4.987 ng/ml
THC-COOH	4.133	167097	1084047	14.254 ng/ml
THC-OH	4.019	27022	3221876	4.693 ng/ml

# AM #26 Cannabinoids Screen Results

**Batch results** D:\MassHunter\Data\2023\am 25-26\030823\QuantResults\cann.batch.bin  
**Calibration Last Update** 3/9/2023 9:07:49 AM

<b>Instrument</b>	69679	<b>Data File</b>	external control blood c4.d
<b>Type</b>	Sample	<b>Sample</b>	external control blood c4
<b>Acq. Method</b>	am 26 cann scr 5-5-20.m	<b>Operator</b>	Anne Nord
<b>Sample Position</b>	P3-C4	<b>Comment</b>	
<b>Injection Volume</b>	5		
<b>Acq. Date-Time</b>	3/8/2023 5:53:12 PM		
<b>Sample Info.</b>			

## Sample Chromatogram



Name	RT	Resp.	ISTD Resp.	Final Conc.
THC	4.425	28666	387407	8.431 ng/ml
THC-COOH	4.093	86176	732020	10.992 ng/ml
THC-OH	4.019	62915	2599543	13.230 ng/ml

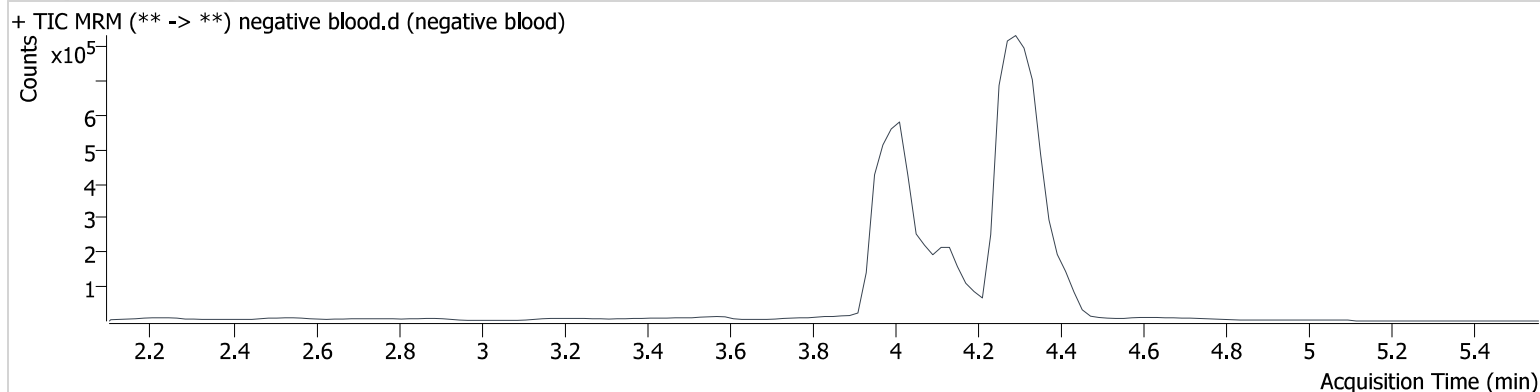


# AM #26 Cannabinoids Screen Results

**Batch results** D:\MassHunter\Data\2023\am 25-26\030823\QuantResults\cann.batch.bin  
**Calibration Last Update** 3/9/2023 9:07:49 AM

<b>Instrument</b>	69679	<b>Data File</b>	negative blood.d
<b>Type</b>	Sample	<b>Sample</b>	negative blood
<b>Acq. Method</b>	am 26 cann scr 5-5-20.m	<b>Operator</b>	Anne Nord
<b>Sample Position</b>	P3-B2	<b>Comment</b>	
<b>Injection Volume</b>	5		
<b>Acq. Date-Time</b>	3/8/2023 4:03:15 PM		
<b>Sample Info.</b>			

## Sample Chromatogram

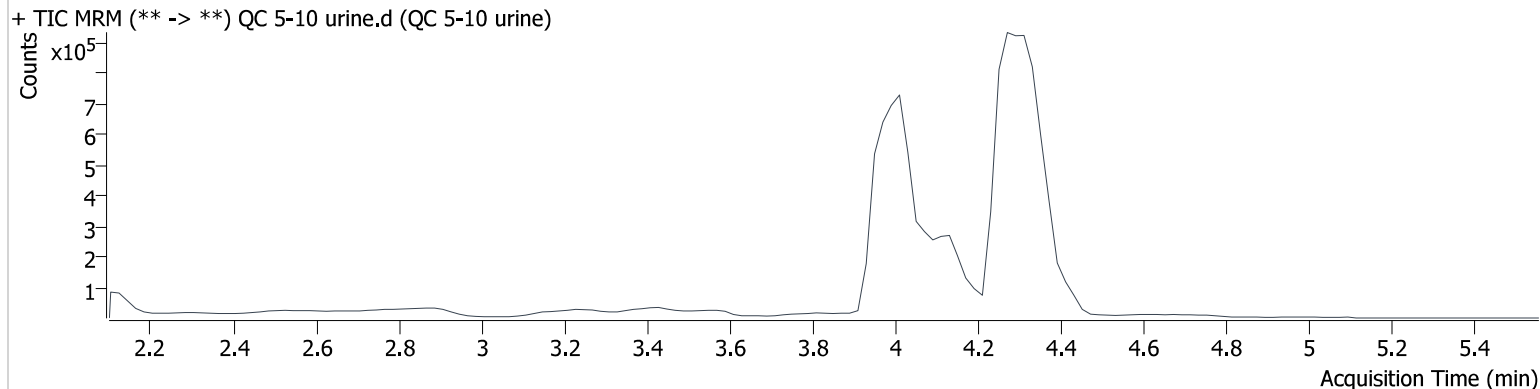


# AM #26 Cannabinoids Screen Results

**Batch results** D:\MassHunter\Data\2023\am 25-26\030823\QuantResults\cann.batch.bin  
**Calibration Last Update** 3/9/2023 9:07:49 AM

<b>Instrument</b>	69679	<b>Data File</b>	QC 5-10 urine.d
<b>Type</b>	Sample	<b>Sample</b>	QC 5-10 urine
<b>Acq. Method</b>	am 26 cann scr 5-5-20.m	<b>Operator</b>	Anne Nord
<b>Sample Position</b>	P3-A2	<b>Comment</b>	
<b>Injection Volume</b>	5		
<b>Acq. Date-Time</b>	3/8/2023 3:56:47 PM		
<b>Sample Info.</b>			

## Sample Chromatogram



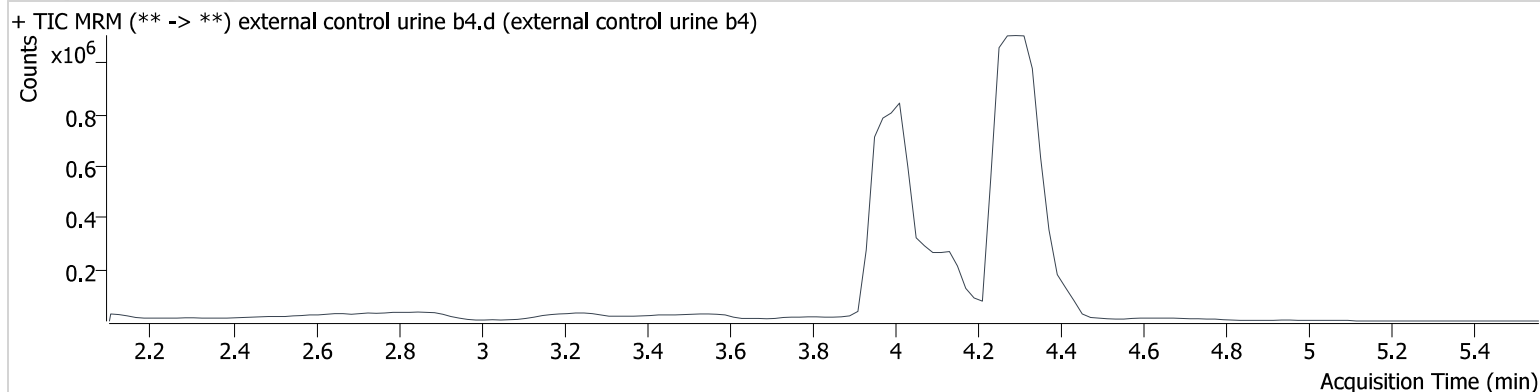
Name	RT	Resp.	ISTD Resp.	Final Conc.
THC	4.385	19179	462718	4.824 ng/ml
THC-COOH	4.133	179871	1171702	14.198 ng/ml
THC-OH	3.999	31993	3977100	4.508 ng/ml

# AM #26 Cannabinoids Screen Results

**Batch results** D:\MassHunter\Data\2023\am 25-26\030823\QuantResults\cann.batch.bin  
**Calibration Last Update** 3/9/2023 9:07:49 AM

<b>Instrument</b>	69679	<b>Data File</b>	external control urine b4.d
<b>Type</b>	Sample	<b>Sample</b>	external control urine b4
<b>Acq. Method</b>	am 26 cann scr 5-5-20.m	<b>Operator</b>	Anne Nord
<b>Sample Position</b>	P3-B4	<b>Comment</b>	
<b>Injection Volume</b>	5		
<b>Acq. Date-Time</b>	3/8/2023 5:46:44 PM		
<b>Sample Info.</b>			

## Sample Chromatogram



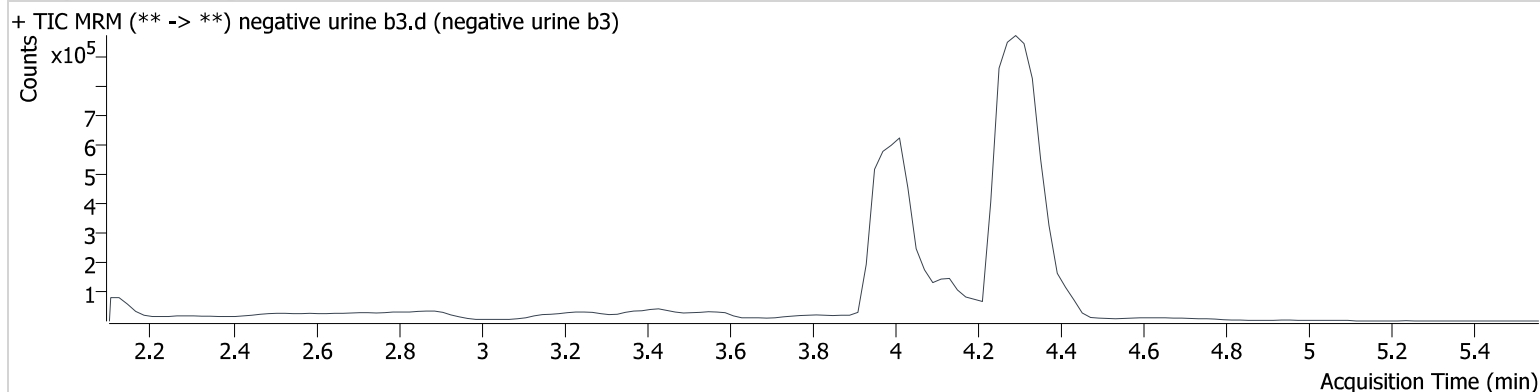
Name	RT	Resp.	ISTD Resp.	Final Conc.
THC	4.425	31308	222655	15.815 ng/ml
THC-COOH	4.093	333534	805254	37.545 ng/ml
THC-OH	4.019	188728	3358729	30.496 ng/ml

# AM #26 Cannabinoids Screen Results

**Batch results** D:\MassHunter\Data\2023\am 25-26\030823\QuantResults\cann.batch.bin  
**Calibration Last Update** 3/9/2023 9:07:49 AM

<b>Instrument</b>	69679	<b>Data File</b>	negative urine b3.d
<b>Type</b>	Sample	<b>Sample</b>	negative urine b3
<b>Acq. Method</b>	am 26 cann scr 5-5-20.m	<b>Operator</b>	Anne Nord
<b>Sample Position</b>	P3-B3	<b>Comment</b>	
<b>Injection Volume</b>	5		
<b>Acq. Date-Time</b>	3/8/2023 4:54:59 PM		
<b>Sample Info.</b>			

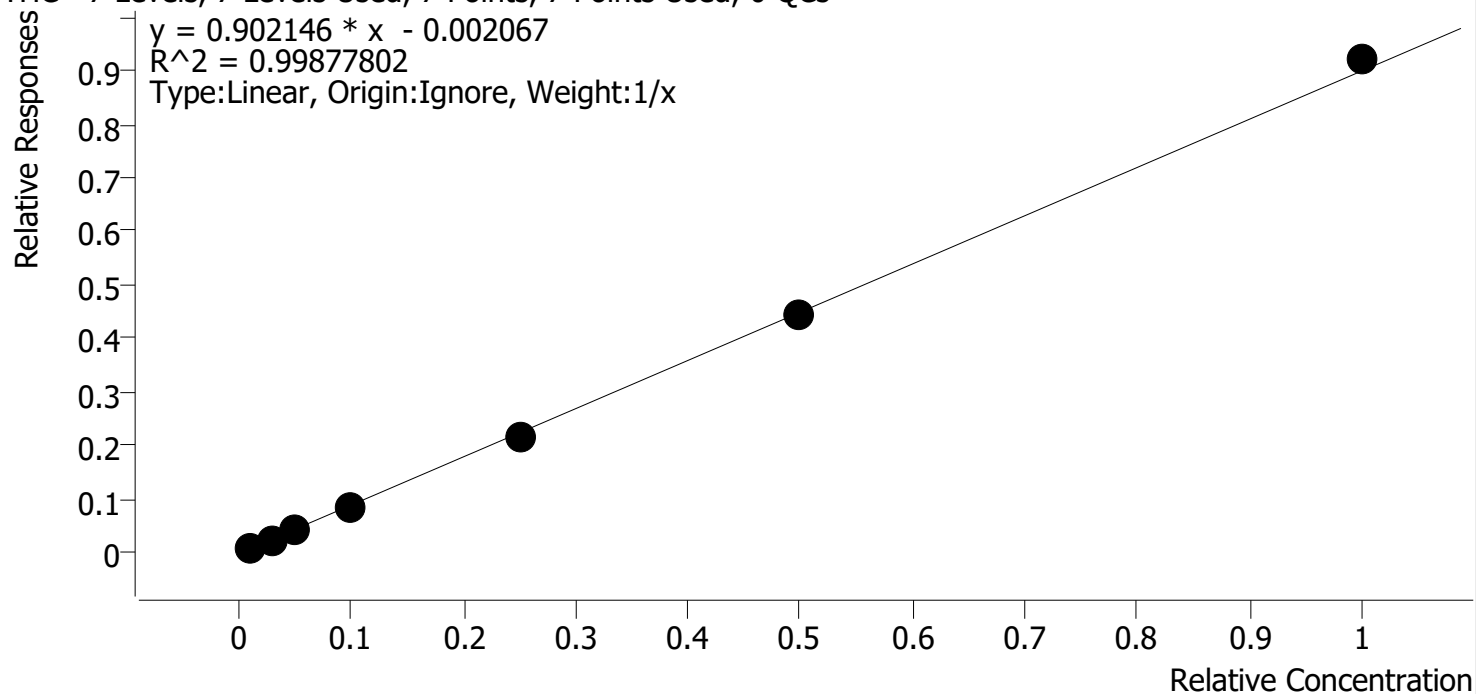
## Sample Chromatogram



# Compound Calibration Report

**Batch results** D:\MassHunter\Data\2023\am 25-26\030823\QuantResults\cann.batch.bin  
**Last Cal. Update** 3/9/2023 9:07 AM  
**Analyst Name** ISP\datastor  
**Analyte** THC **Internal Standard** THC-d3

THC - 7 Levels, 7 Levels Used, 7 Points, 7 Points Used, 0 QCs



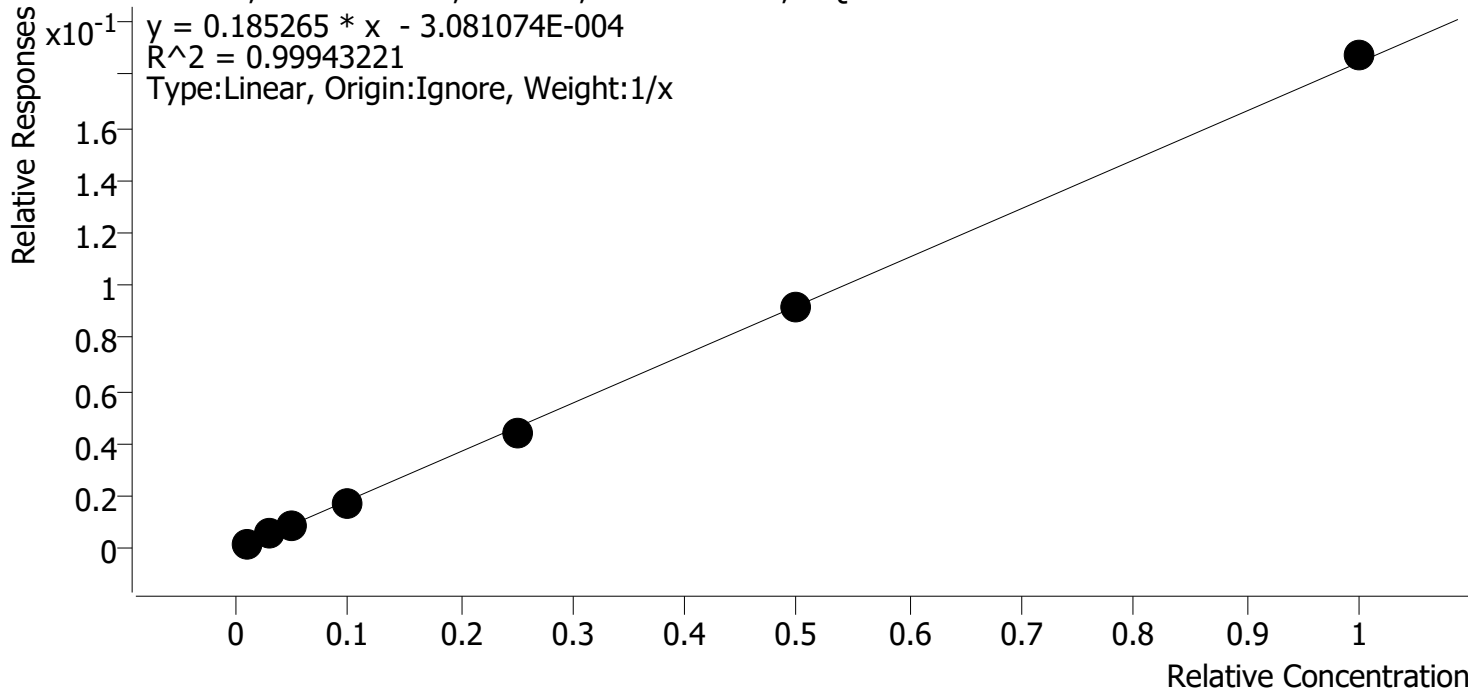
Sample	Level	Enabled	Expected Concentration	Final Concentration	Accuracy
cal 1	1	✓	1.0	1.2	117.2
cal 2	2	✓	3.0	3.0	98.7
cal 3	3	✓	5.0	4.7	94.2
cal 4	4	✓	10.0	9.2	92.3
cal 5	5	✓	25.0	24.0	96.1
cal-6	6	✓	50.0	49.6	99.2
cal-7	7	✓	100.0	102.3	102.3



# Compound Calibration Report

**Batch results** D:\MassHunter\Data\2023\am 25-26\030823\QuantResults\cann.batch.bin  
**Last Cal. Update** 3/9/2023 9:07 AM  
**Analyst Name** ISP\datastor  
**Analyte** THC-OH **Internal Standard** THC-OH-d3

THC-OH - 7 Levels, 7 Levels Used, 7 Points, 7 Points Used, 0 QCs



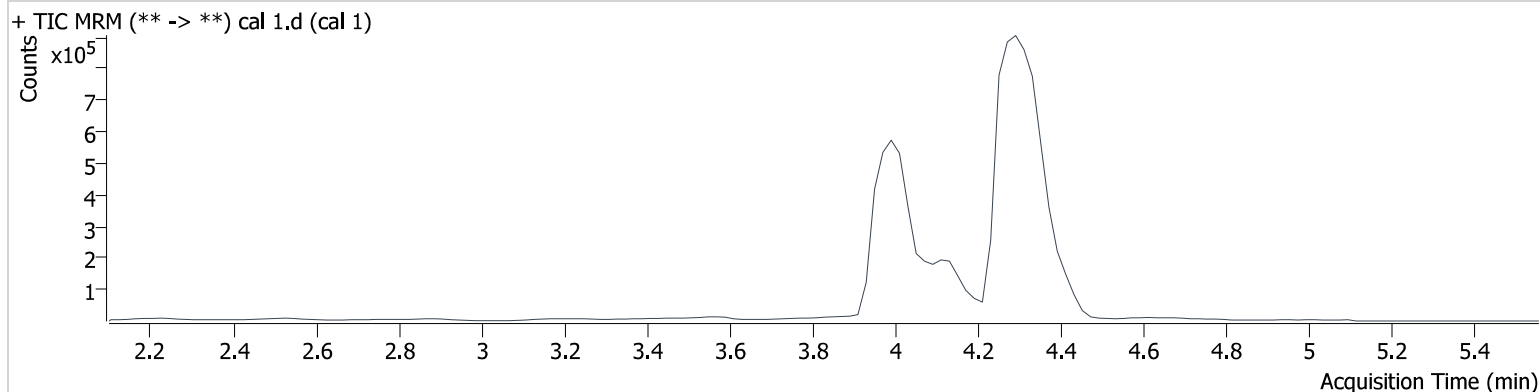
Sample	Level	Enabled	Expected Concentration	Final Concentration	Accuracy
cal 1	1	✓	1.0	1.1	111.0
cal 2	2	✓	3.0	3.0	99.5
cal 3	3	✓	5.0	4.8	97.0
cal 4	4	✓	10.0	9.4	94.3
cal 5	5	✓	25.0	24.2	96.8
cal-6	6	✓	50.0	50.1	100.1
cal-7	7	✓	100.0	101.4	101.4

# AM #26 Cannabinoids Screen Results

**Batch results** D:\MassHunter\Data\2023\am 25-26\030823\QuantResults\cann.batch.bin  
**Calibration Last Update** 3/9/2023 9:07:49 AM

<b>Instrument</b>	69679	<b>Data File</b>	cal 1.d
<b>Type</b>	Cal	<b>Sample</b>	cal 1
<b>Acq. Method</b>	am 26 cann scr 5-5-20.m	<b>Operator</b>	Anne Nord
<b>Sample Position</b>	P3-A1	<b>Comment</b>	
<b>Injection Volume</b>	5		
<b>Acq. Date-Time</b>	3/8/2023 3:04:53 PM		
<b>Sample Info.</b>			

## Sample Chromatogram



Name	RT	Resp.	ISTD Resp.	Final Conc.
THC	4.385	7087	833184	1.172 ng/ml <b>Low</b>
THC-COOH	4.113	48197	945402	5.015 ng/ml <b>Low</b>
THC-OH	3.999	5581	3192610	1.110 ng/ml <b>Low</b>

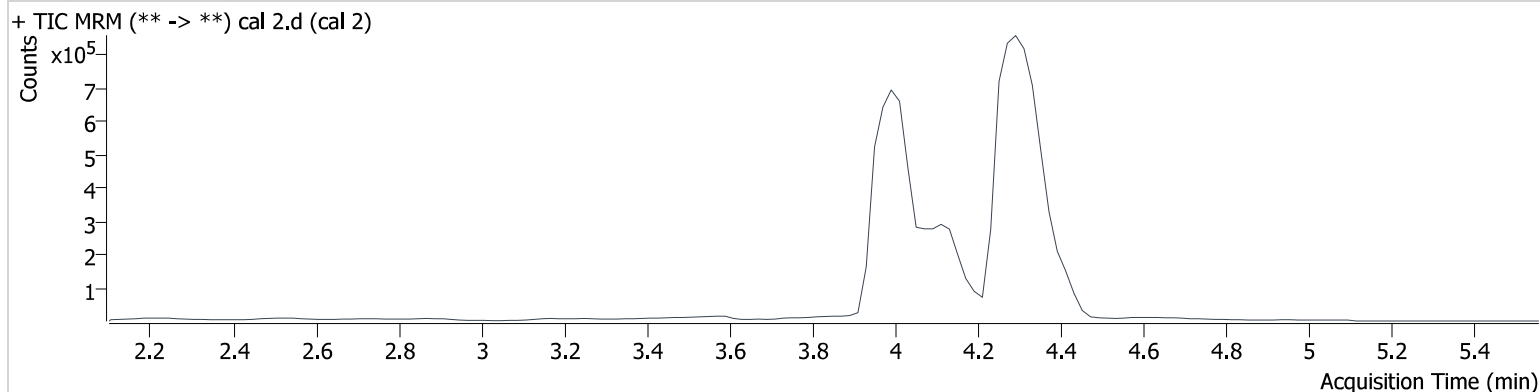


# AM #26 Cannabinoids Screen Results

**Batch results** D:\MassHunter\Data\2023\am 25-26\030823\QuantResults\cann.batch.bin  
**Calibration Last Update** 3/9/2023 9:07:49 AM

<b>Instrument</b>	69679	<b>Data File</b>	cal 2.d
<b>Type</b>	Cal	<b>Sample</b>	cal 2
<b>Acq. Method</b>	am 26 cann scr 5-5-20.m	<b>Operator</b>	Anne Nord
<b>Sample Position</b>	P3-B1	<b>Comment</b>	
<b>Injection Volume</b>	5		
<b>Acq. Date-Time</b>	3/8/2023 3:11:31 PM		
<b>Sample Info.</b>			

## Sample Chromatogram



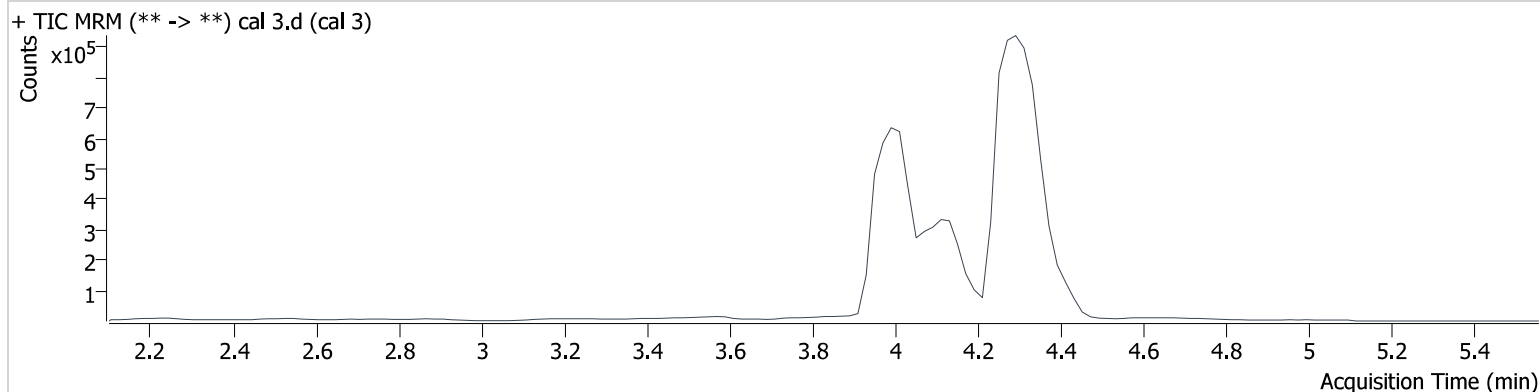
Name	RT	Resp.	ISTD Resp.	Final Conc.
THC	4.385	22270	903291	2.962 ng/ml <b>Low</b>
THC-COOH	4.113	136693	1284510	9.979 ng/ml <b>Low</b>
THC-OH	3.999	20115	3853363	2.984 ng/ml <b>Low</b>

# AM #26 Cannabinoids Screen Results

**Batch results** D:\MassHunter\Data\2023\am 25-26\030823\QuantResults\cann.batch.bin  
**Calibration Last Update** 3/9/2023 9:07:49 AM

<b>Instrument</b>	69679	<b>Data File</b>	cal 3.d
<b>Type</b>	Cal	<b>Sample</b>	cal 3
<b>Acq. Method</b>	am 26 cann scr 5-5-20.m	<b>Operator</b>	Anne Nord
<b>Sample Position</b>	P3-C1	<b>Comment</b>	
<b>Injection Volume</b>	5		
<b>Acq. Date-Time</b>	3/8/2023 3:17:59 PM		
<b>Sample Info.</b>			

## Sample Chromatogram



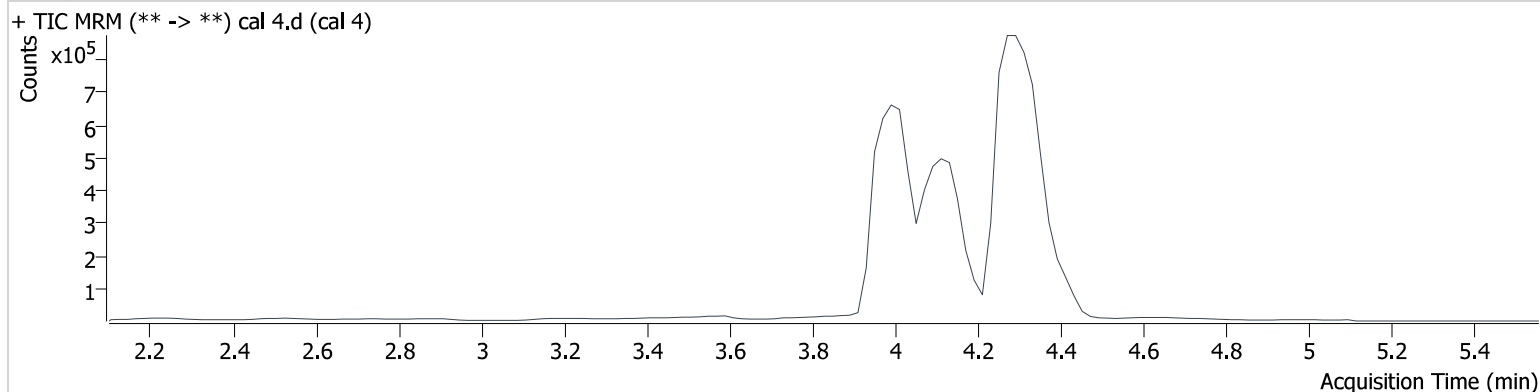
Name	RT	Resp.	ISTD Resp.	Final Conc.
THC	4.385	26105	645641	4.711 ng/ml
THC-COOH	4.133	260021	1196092	19.919 ng/ml
THC-OH	4.019	29981	3456796	4.848 ng/ml

# AM #26 Cannabinoids Screen Results

**Batch results** D:\MassHunter\Data\2023\am 25-26\030823\QuantResults\cann.batch.bin  
**Calibration Last Update** 3/9/2023 9:07:49 AM

<b>Instrument</b>	69679	<b>Data File</b>	cal 4.d
<b>Type</b>	Cal	<b>Sample</b>	cal 4
<b>Acq. Method</b>	am 26 cann scr 5-5-20.m	<b>Operator</b>	Anne Nord
<b>Sample Position</b>	P3-D1	<b>Comment</b>	
<b>Injection Volume</b>	5		
<b>Acq. Date-Time</b>	3/8/2023 3:24:27 PM		
<b>Sample Info.</b>			

## Sample Chromatogram



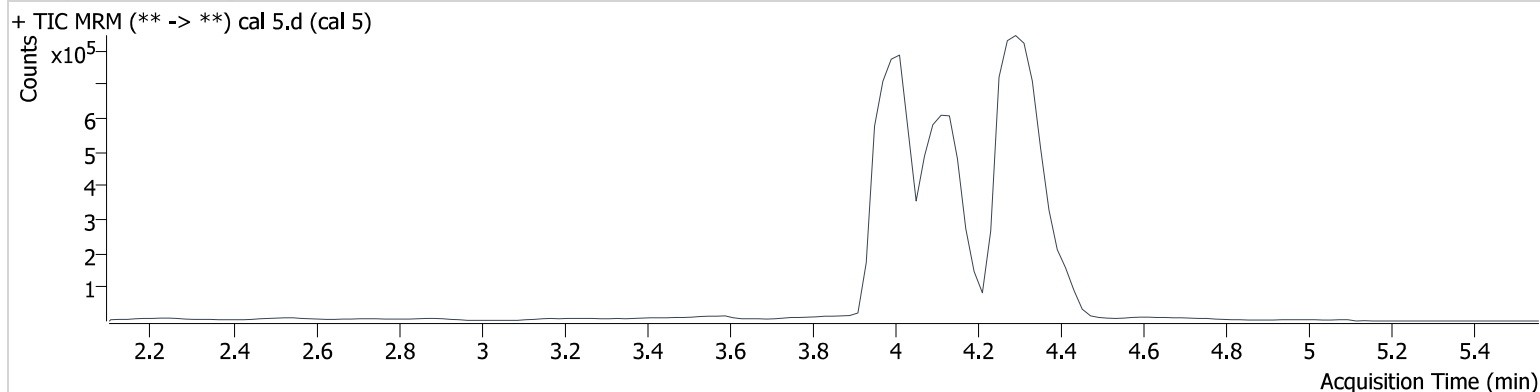
Name	RT	Resp.	ISTD Resp.	Final Conc.
THC	4.385	55818	687322	9.231 ng/ml
THC-COOH	4.113	643026	1162765	49.978 ng/ml
THC-OH	3.999	58216	3390883	9.433 ng/ml

# AM #26 Cannabinoids Screen Results

**Batch results** D:\MassHunter\Data\2023\am 25-26\030823\QuantResults\cann.batch.bin  
**Calibration Last Update** 3/9/2023 9:07:49 AM

<b>Instrument</b>	69679	<b>Data File</b>	cal 5.d
<b>Type</b>	Cal	<b>Sample</b>	cal 5
<b>Acq. Method</b>	am 26 cann scr 5-5-20.m	<b>Operator</b>	Anne Nord
<b>Sample Position</b>	P3-E1	<b>Comment</b>	
<b>Injection Volume</b>	5		
<b>Acq. Date-Time</b>	3/8/2023 3:30:55 PM		
<b>Sample Info.</b>			

## Sample Chromatogram



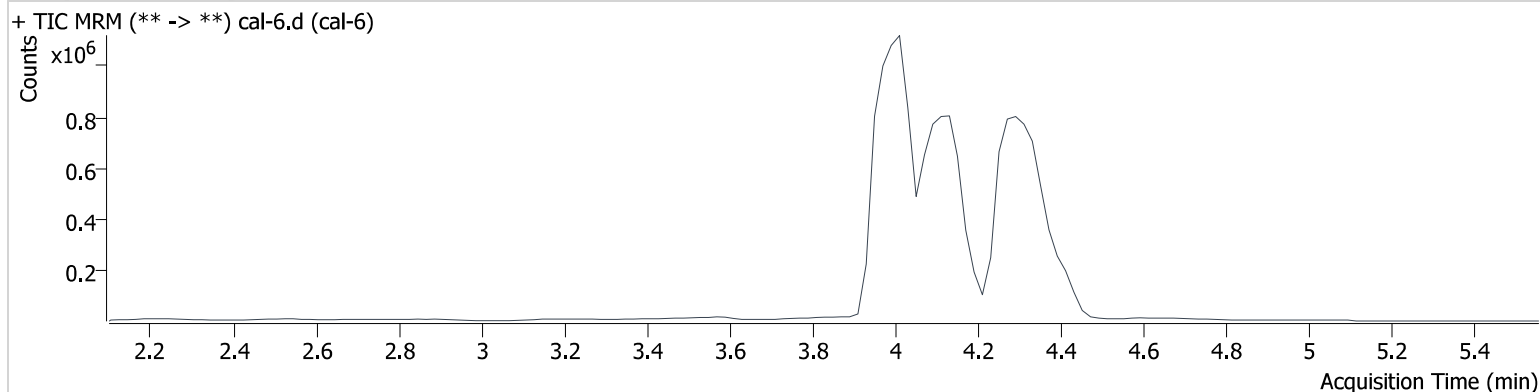
Name	RT	Resp.	ISTD Resp.	Final Conc.
THC	4.385	151632	706671	24.014 ng/ml
THC-COOH	4.113	925328	1131771	73.674 ng/ml
THC-OH	3.999	146740	3296407	24.194 ng/ml

# AM #26 Cannabinoids Screen Results

**Batch results** D:\MassHunter\Data\2023\am 25-26\030823\QuantResults\cann.batch.bin  
**Calibration Last Update** 3/9/2023 9:07:49 AM

<b>Instrument</b>	69679	<b>Data File</b>	cal-6.d
<b>Type</b>	Cal	<b>Sample</b>	cal-6
<b>Acq. Method</b>	am 26 cann scr 5-5-20.m	<b>Operator</b>	Anne Nord
<b>Sample Position</b>	P3-F1	<b>Comment</b>	
<b>Injection Volume</b>	5		
<b>Acq. Date-Time</b>	3/8/2023 3:37:23 PM		
<b>Sample Info.</b>			

## Sample Chromatogram



Name	RT	Resp.	ISTD Resp.	Final Conc.
THC	4.385	345698	776354	49.587 ng/ml
THC-COOH	4.133	1341048	1208979	99.795 ng/ml
THC-OH	4.019	327523	3543573	50.056 ng/ml

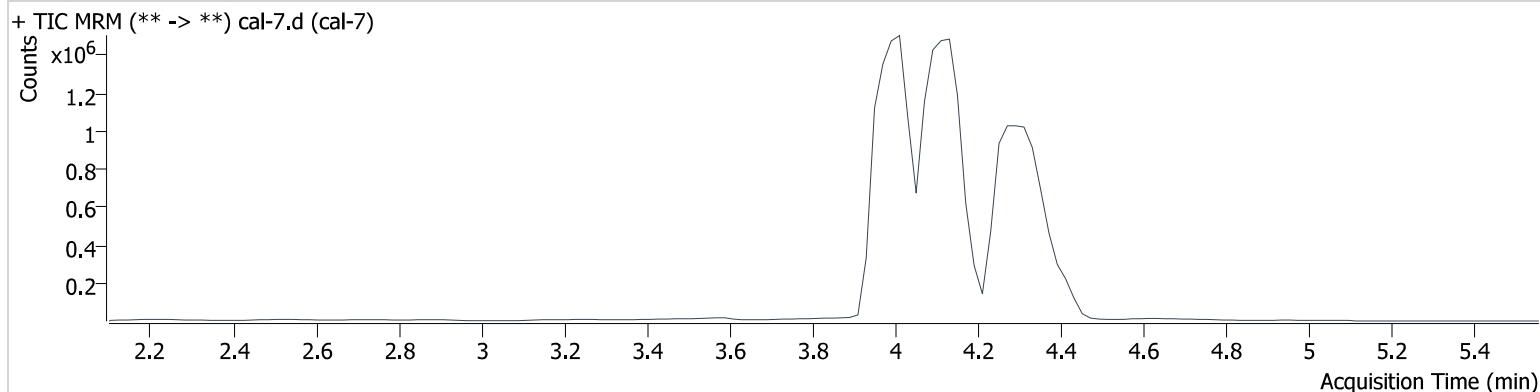
# AM #26 Cannabinoids Screen Results

**Batch results** D:\MassHunter\Data\2023\am 25-26\030823\QuantResults\cann.batch.bin  
**Calibration Last Update** 3/9/2023 9:07:49 AM

<b>Instrument</b>	69679	<b>Data File</b>	cal-7.d
<b>Type</b>	Cal	<b>Sample</b>	cal-7
<b>Acq. Method</b>	am 26 cann scr 5-5-20.m	<b>Operator</b>	Anne Nord
<b>Sample Position</b>	P3-G1	<b>Comment</b>	
<b>Injection Volume</b>	5		
<b>Acq. Date-Time</b>	3/8/2023 3:43:51 PM		

**Sample Info.**

## Sample Chromatogram



Name	RT	Resp.	ISTD Resp.	Final Conc.
THC	4.385	485388	527002	102.323 ng/ml
THC-COOH	4.133	2978590	1044516	255.848 ng/ml
THC-OH	4.019	617260	3291959	101.376 ng/ml